

06.

Installation File Inward Corner

Overview

You are now in Installation File 1. Need another file?
Go to cladix.eu to download it.

1. **Installation File 1:** Support Structure
2. **Installation File 2:** L Profile (Optional)
3. **Installation File 3:** Start
4. **Installation File 4:** Alternate Start (Optional)
5. **Installation File 5:** Fill Packages
6. **Installation File 6:** Inward Corner (Optional)
7. **Installation File 7:** Outward Corner (Optional)
8. **Installation File 8:** Stop

Materials list



Safety glasses



Noise-reducing headphones



Gloves



Pencil



Measuring tape



(Vertical) Level



Cross Line Laser Level



Sawhorses or workbench (for materials) + accessories



Ladder



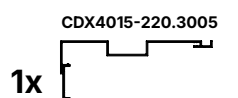
Regular screwdriver or Impact drill



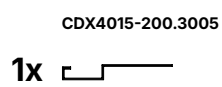
Self-tapping screws (+ Matching screw bits)



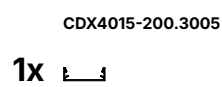
Chop and miter saw (or ordinary hand and/or metal saw)



Inward Corner profile, length 3005 mm



Stop Profile, length 3005 mm



Trim clip, length 3005 mm

Optioneel:



Vacuum cleaner



Tool belt



Tool kit



Plastic shims of various thicknesses

! ALWAYS FOLLOW THE MANUFACTURER'S OR SUPPLIER'S GUIDELINES AND PROCEDURES.
! ALWAYS ENSURE A SAFE WORKING ENVIRONMENT AND USE PERSONAL PROTECTIVE EQUIPMENT.

Step-by-step plan



Cut the inward corner profile to the correct height to match the facade.

Wear personal protective equipment (PPE) while cutting.

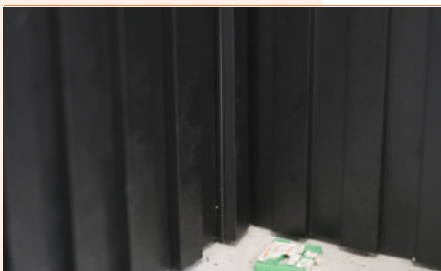


Hook the inward corner profile into the last mounted 1- or 2-line profile. If necessary, use the available 4 mm clearance for perfect edge alignment at the end of the wall. Secure the corner profile with the self-tapping screws. Make sure the profile is perfectly vertical.

See the principle of our flexible tongue-in-groove system here:
www.cladix.eu/tutorial/het-montagesysteem/



Mount the corner profile securely to the horizontal battens of the support structure.



Click the trim clip onto the inward corner profile for a nice finish.

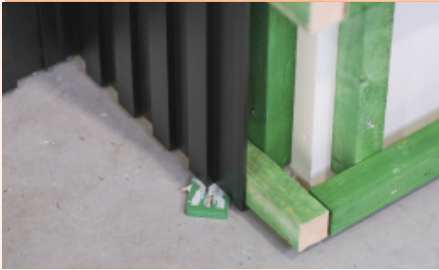


Finish the rest of the wall with 1- and 2-line profiles.



Combine 1- and 2-line profiles as calculated with our calculation tool.

Get the calculation tool here:
www.cladix.eu/rekentool/



Make sure there is still room at the end of the installation to attach the stop profile.

Disclaimer

Publisher and Property

This document, both in its printed and digital form, is published by Cladix BV, located at Kunststal 19a, B-9900 Eeklo (Belgium). For more information, please contact us at www.cladix.eu.

Trademarks

All trademarks mentioned in Cladix BV communications are the property of Cladix BV or are legally. Any rights not expressly granted in this publication are reserved.

Reproduction and Use

No part of Cladix BV's publications, whether as digital or hard copy, may be reproduced, copied or translated without the prior written consent of Cladix BV. Written consent can be obtained from our managing director or the marketing department.

Liability and Content

Although Cladix BV compiles the information on this document and in other communications carefully and to the best of its knowledge, we accept no liability for errors and/or inaccuracies. The information and drawings in our documentation are indicative only. Cladix BV is not responsible for errors in these documents. All suggested scenarios are illustrative and should always be adapted to the specific construction situation by the contractor or installer. Some projects require specific stability calculations that are not provided by Cladix BV.

These should be checked and calculated by the installer or contractor.

Use of Third Party Information

All references to and images by products or information by third parties are purely indicative. Their use must always be agreed on with the particular producer or supplier. Third-party information and drawings may require specific tools and knowledge to enable installation or use. It is the responsibility of the builder or installer to follow proper procedures and obtain the information.

Amendments and Local Legislation

Cladix BV reserves the right to amend any information used in any of our documents without prior notice. All construction and machining is subject to local legislation, rules and standards.

